

This architectural elevation drawing shows a building facade with various height markers and level indicators. The drawing includes a ground line (GL) at +45.65m and a ground floor level (GFL) at +45.80m. The building has a total height of 17,450mm, with a base section of 3,150mm and a main section of 14,550mm. The main section is divided into four floors, each 2,850mm high, with a top section of 2,900mm. The building is divided into two main sections: a left section with a brown facade and a right section with a dark brick facade. The left section has a total height of 15,000mm, and the right section has a total height of 15,000mm. The building is surrounded by trees and a sky with birds. A north arrow is located at the bottom center of the drawing.

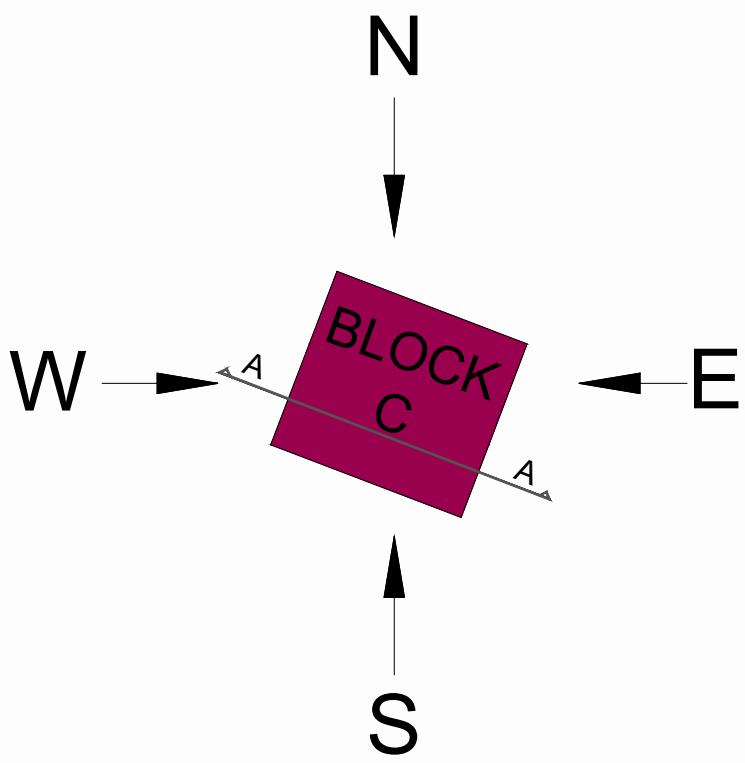
Key height markers and level indicators include:

- RL +63.10m (Roof Level)
- FFL +60.20m (Finished Floor Level)
- FFL +57.35m (Finished Floor Level)
- FFL +54.50m (Finished Floor Level)
- FFL +51.65m (Finished Floor Level)
- FFL +48.80m (Finished Floor Level)
- GFL +45.80m (Ground Floor Level)
- GL +45.65m (Ground Level)

The drawing also includes a north arrow and a scale bar indicating 1:100.

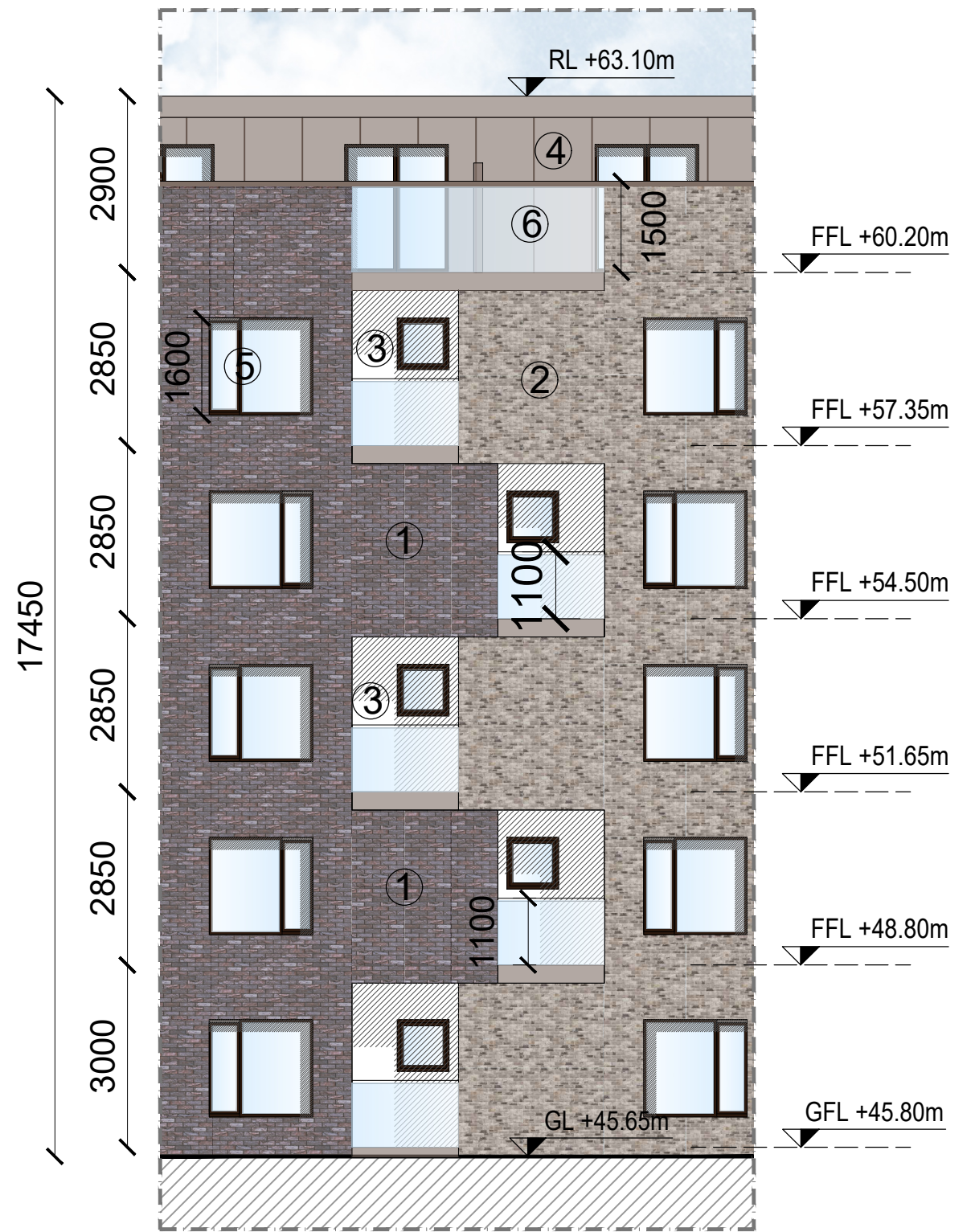
Architectural elevation drawing of a building facade. The drawing shows a multi-story building with a central vertical axis and symmetrical wings. The facade is composed of various materials, including brickwork and lighter-colored panels. Numerous windows are visible, some with shutters. The drawing includes height markers on the left and right sides, indicating floor levels (FFL) and ground level (GL). The total height of the building is marked as 17450. The drawing is set against a background of stylized trees and a cloudy sky.

A diagram showing a purple square block labeled "BLOCK C" on a horizontal surface. Four arrows represent forces acting on the block: a downward arrow labeled "N", an upward arrow labeled "S", a leftward arrow labeled "W", and a rightward arrow labeled "E". The block is tilted slightly to the right. A compass rose is located in the top right corner of the diagram area.



MATERIAL SCHEDULE

- NOTE:**
ALL MATERIALS TO BE AGREED BY WAY OF
COMPLIANCE TO PLANNING PERMISSION




DETAIL 01
SCALE 1:100

RETENTION

Rev	Initial	Date	Revision Description

DOWNEY

29 Marston Square,
D02RW64
+253 (0) 1 253 0220
info@downey.ie



Planning
Number

2022

CLIENT	RADELSWOOD HOLDINGS LTD.	SCALE @ A1	AS SHOWN	PAPER SIZE	A1
PROJECT	RETENTION ALTERATIONS TO PERMITTED (SHD) (VALUED PROCESS) - LANE4 AT PALMERS DATE KENNELSFORT ROAD LOWER, PALMERSTOWN, DUBLIN 20	DRAWN BY	GM, RA & LD	JOB NO	
DWG. TITLE	AS GRANTED_SECTION AND ELEVATIONS BLOCK C	CHECKED BY	IF	243-052	
		DATE	JULY 2025	DRAW NO	
		REVISION:		RT-206	